

CT 30-ZP4

Short Centre-loaded Mobile Antenna for the 30 MHz Band

DESCRIPTION

- Short antenna with attractive appearance ideal for mounting on the car roof.
- High efficiency in spite of low height due to high-Q centre-loading coil and matching unit built into mount.
- Stainless steel ZP4-mount with ball-joint and wing screw whip-fastening system.
- Simple mounting exclusively with access from the outside. Models with roof thickness from 2 mm to 7.5 mm mounting from the inside.
- Delivered with 4 m cable permanently attached to the mount and terminated with FME-connector.



ORDERING DESIGNATIONS

TYPE	PRODUCT NO.
CT 30-ZP4	130000601

SPECIFICATIONS

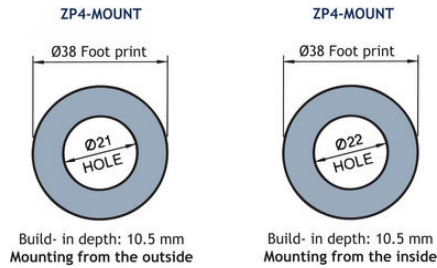
ELECTRICAL	
MODEL	CT 30-ZP4
ANTENNA TYPE	Centre-loaded mobile antenna
FREQUENCY	30 MHz
IMPEDANCE	Nom. 50 Ω
POLARIZATION	Vertical
BANDWIDTH	≥ 350 kHz @ SWR ≤ 1.5
SWR	≤ 1.3
MAX. POWER	200 W
MECHANICAL	
MATERIALS	Whip: Stainless steel Nylon Chromed brass Mount: Chromed brass Weather- and shockproof plastics Stainless steel
RECOMMENDED INSTALLATION TORQUE	7.5 ± 1 Nm
CABLE	4 m RG 58
COLOUR	Bright/black
HEIGHT	Approx. 0.68 m (0.06λ)
WEIGHT	Approx. 490 g
MOUNTING	ø21 mm dia. hole (For roof thickness 2 mm up to 7.5 mm mounting hole should be ø22 mm dia.)
ROOF THICKNESS	Max. 2.0 mm (Models up to 7.5 mm on request)

INSTALLATION

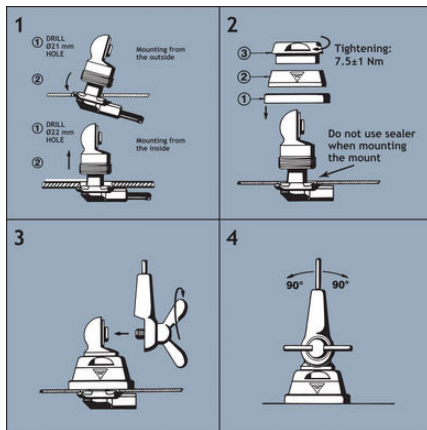
This antenna is supplied with type ZP4-mount. The whip is fastened to the mount by means of our standard ball-joint and wing screw system. The adjustable ball-joint ensures that the whip can always be mounted in a vertical position independent of the angle of the installation spot.

The ZP4-mount is particularly well suited for mounting on car-roofs because of its ability to be installed exclusively with access from the outside. The ZP4-Mount for roof thickness from 2 mm to 7.5 mm must be mounted from the inside. However, the antenna can be installed anywhere on the car, as the ZP4-mount is equally well suited for mounting on e.g. trunk or wing.

1. INSTALLATION DIMENSIONS



2. INSTALLATION STEPS



Do not use sealer on rubber gasket or other places.

3. TUNING

The antenna should always be post-adjusted using an SWR-meter, especially if mounted near metal parts parallel to the whip. Loosen the union nut at the top of the coil and pull out the whip approx. 5 mm at a time until best possible SWR is obtained. Fasten the union nut thoroughly.

PLEASE NOTE

To make this antenna operate as efficiently as possible, a matching unit has been built into the antenna mount. Consequently, neither mount nor whip can be used together with other mounts/whips.



PROCOM France S.A.R.L. se réserve le droit d'améliorer les spécifications sans préavis.

05/07/11